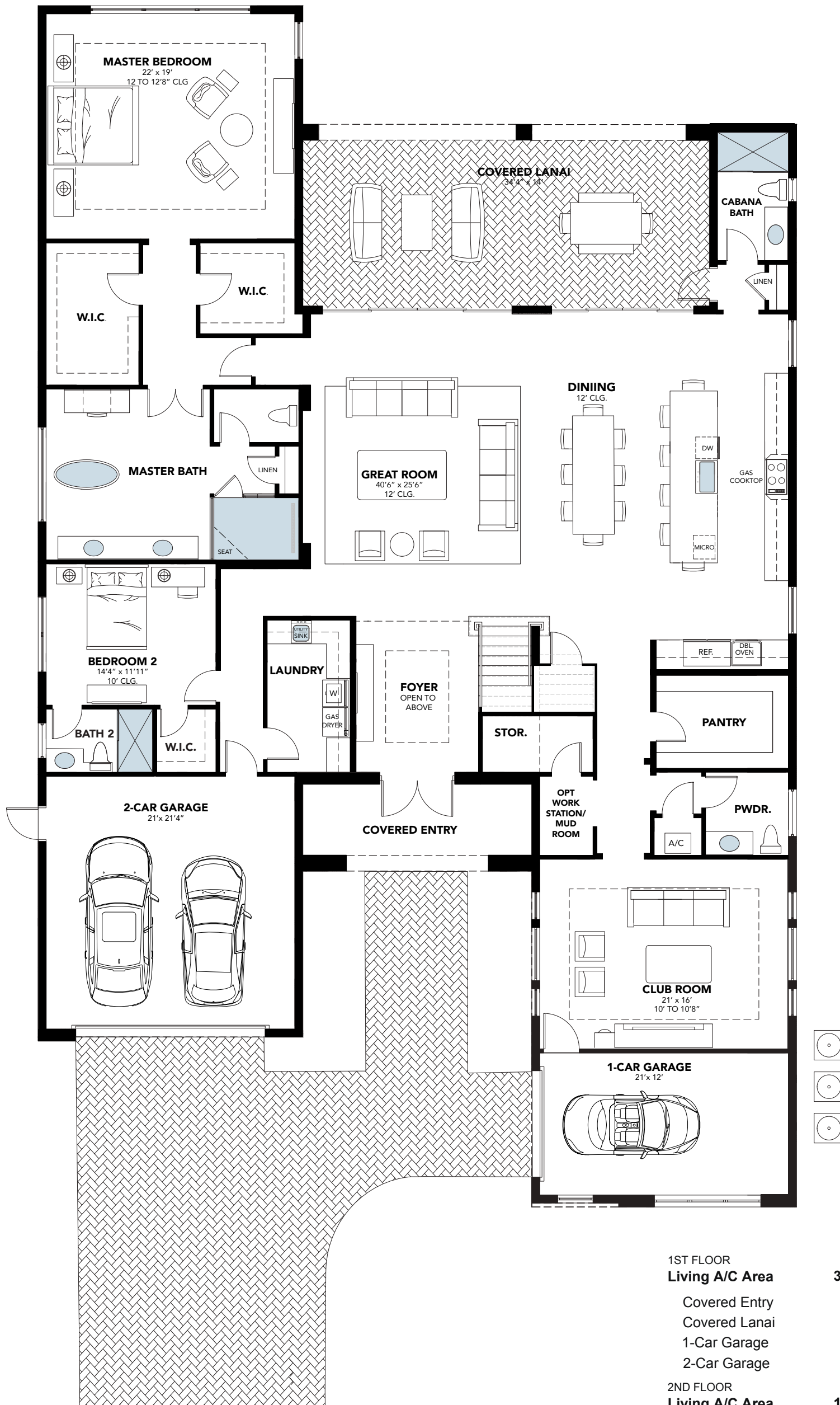


# The Dominica 1ST FLOOR

5 BEDROOMS, 6.5 BATHS, LOFT, CLUB ROOM, 3-CAR GARAGE



1ST FLOOR		
<b>Living A/C Area</b>		<b>3,748 Sq. Ft.</b>
Covered Entry		145 Sq. Ft.
Covered Lanai		527 Sq. Ft.
1-Car Garage		288 Sq. Ft.
2-Car Garage		492 Sq. Ft.
2ND FLOOR		
<b>Living A/C Area</b>		<b>1,574 Sq. Ft.</b>
<b>Total Living A/C Area</b>		<b>5,322 Sq. Ft.</b>
<b>Total</b>		<b>6,774 Sq. Ft.</b>

## CORAL ISLES

THE ESTATE HOME COLLECTION AT AVENIR

# The Dominica 2ND FLOOR

5 BEDROOMS, 6.5 BATHS, LOFT, CLUB ROOM, 3-CAR GARAGE



1ST FLOOR	
<b>Living A/C Area</b>	<b>3,748 Sq. Ft.</b>
Covered Entry	145 Sq. Ft.
Covered Lanai	527 Sq. Ft.
1-Car Garage	288 Sq. Ft.
2-Car Garage	492 Sq. Ft.
2ND FLOOR	
<b>Living A/C Area</b>	<b>1,574 Sq. Ft.</b>
<b>Total Living A/C Area</b>	<b>5,322 Sq. Ft.</b>
<b>Total</b>	<b>6,774 Sq. Ft.</b>

## CORAL ISLES

THE ESTATE HOME COLLECTION AT AVENIR