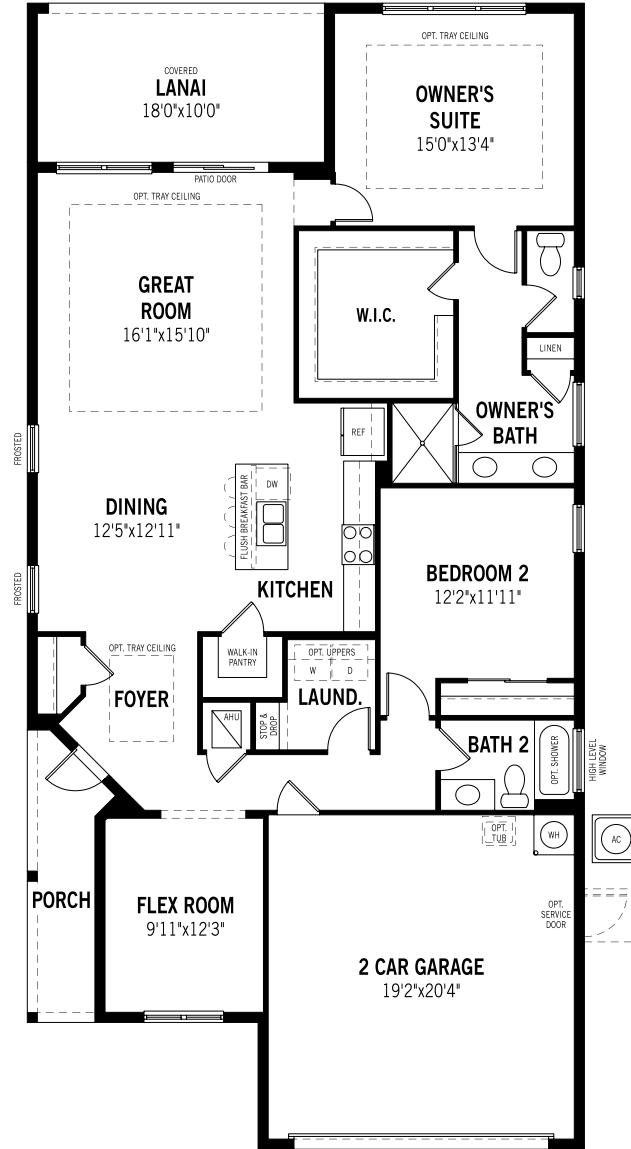




Aspen - First Floor

🏠 0 | 2 Beds | 2 Baths | 1,728 sq. ft.



Unselected Options:

Bedroom 3 in Lieu of Flex Room, Spa Shower, Owner's Bath Oasis, Gourmet Kitchen, Retreat in Lieu of Bedroom 2, Study in Lieu of Flex Room

Printed on

Plans and elevations are artist's renderings and may contain options which are not standard on all models. Mattamy Homes reserves the right to make changes to these floorplans, specifications, dimensions and elevations without prior notice. Stated dimensions and square footage are approximate and should not be used as representation of the home's precise or actual size. Square footage of single family homes is generally based upon ANSI Z765-2003 but may vary from time to time and without notice. Square footage of multi-family homes are generally based upon ANSI BOMA Z65.1-1996 but may vary from time to time and without notice.



Aspen -

🏠 0 | 2 Beds | 2 Baths | 1,728 sq. ft.



Elevation Traditional



Elevation Coastal



Elevation Contemporary

Plans and elevations are artist's renderings and may contain options which are not standard on all models. Mattamy Homes reserves the right to make changes to these floorplans, specifications, dimensions and elevations without prior notice. Stated dimensions and square footage are approximate and should not be used as representation of the home's precise or actual size. Square footage of single family homes is generally based upon ANSI Z765-2003 but may vary from time to time and without notice. Square footage of multi-family homes are generally based upon ANSI BOMA Z65.1-1996 but may vary from time to time and without notice.