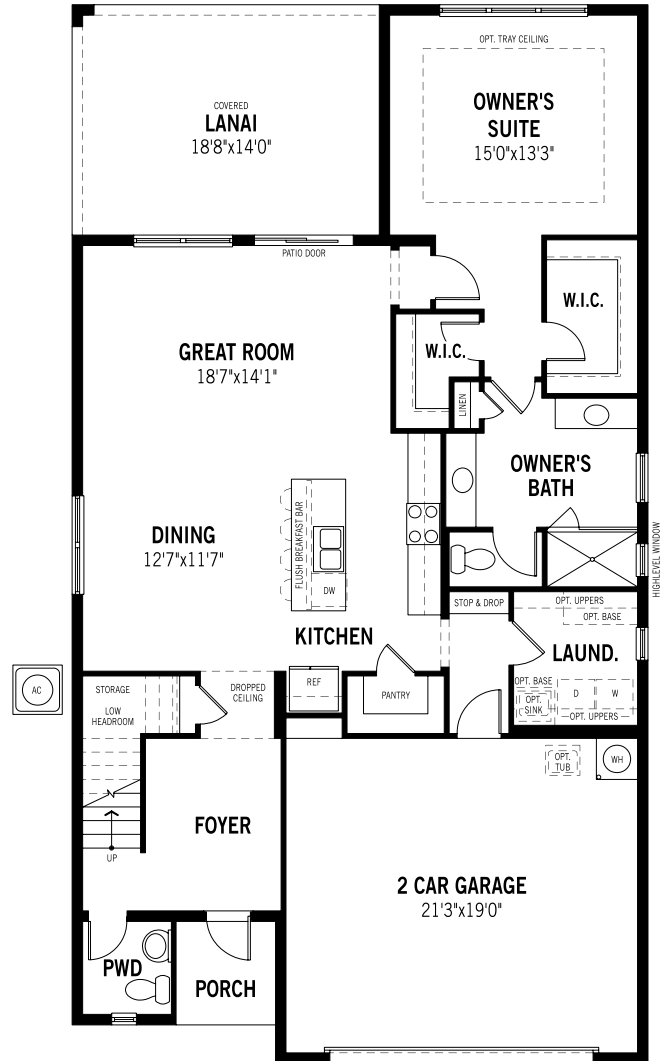




Danbury - First Floor

🏠 0 | 4 Beds | 2 Baths | 1 Half Bath | 2,691 sq. ft.



Unselected Options: Gourmet Kitchen, Owner's Bath Oasis, Spa Shower

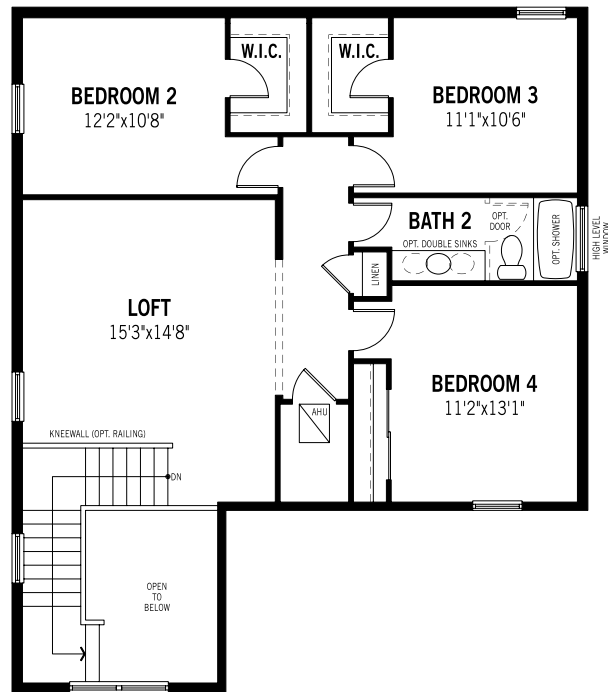
Printed on

Plans and elevations are artist's renderings and may contain options which are not standard on all models. Mattamy Homes reserves the right to make changes to these floorplans, specifications, dimensions and elevations without prior notice. Stated dimensions and square footage are approximate and should not be used as representation of the home's precise or actual size. Square footage of single family homes is generally based upon ANSI Z765-2003 but may vary from time to time and without notice. Square footage of multi-family homes are generally based upon ANSI BOMA Z65.1-1996 but may vary from time to time and without notice.



Danbury - Second Floor

0 | 4 Beds | 2 Baths | 1 Half Bath | 2,691 sq. ft.



Unselected Options: Bedroom 2 w/ Bath 4, Bedroom 5 w/ Bath 3 in Lieu of Loft

Printed on

Plans and elevations are artist's renderings and may contain options which are not standard on all models. Mattamy Homes reserves the right to make changes to these floorplans, specifications, dimensions and elevations without prior notice. Stated dimensions and square footage are approximate and should not be used as representation of the home's precise or actual size. Square footage of single family homes is generally based upon ANSI Z765-2003 but may vary from time to time and without notice. Square footage of multi-family homes are generally based upon ANSI BOMA Z65.1-1996 but may vary from time to time and without notice.



Danbury -

📍 0 | 4 Beds | 2 Baths | 1 Half Bath | 2,691 sq. ft.



Elevation Traditional



Elevation Contemporary



Elevation Coastal

Plans and elevations are artist's renderings and may contain options which are not standard on all models. Mattamy Homes reserves the right to make changes to these floorplans, specifications, dimensions and elevations without prior notice. Stated dimensions and square footage are approximate and should not be used as representation of the home's precise or actual size. Square footage of single family homes is generally based upon ANSI Z765-2003 but may vary from time to time and without notice. Square footage of multi-family homes are generally based upon ANSI BOMA Z65.1-1996 but may vary from time to time and without notice.