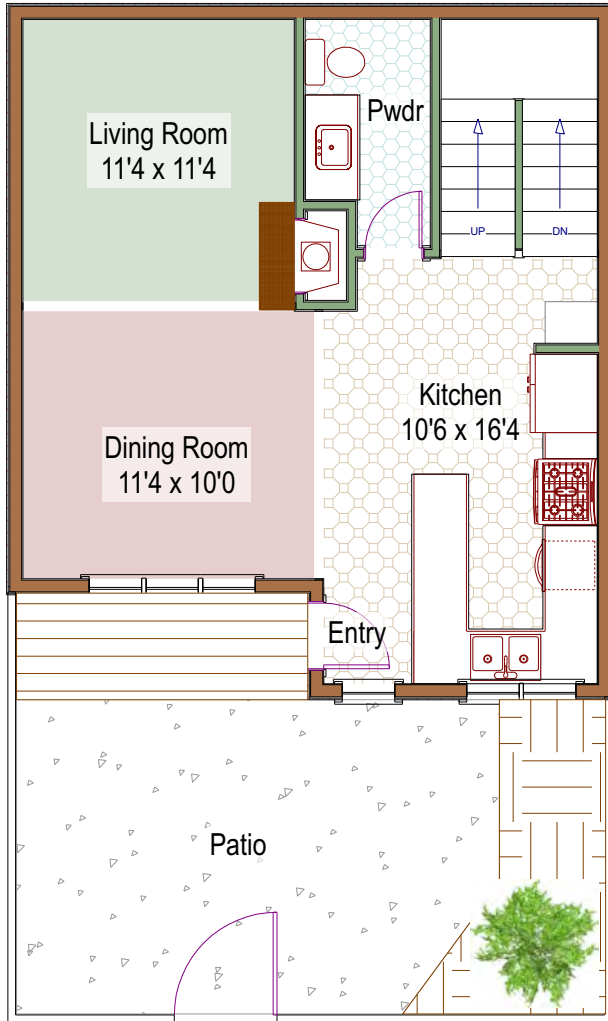
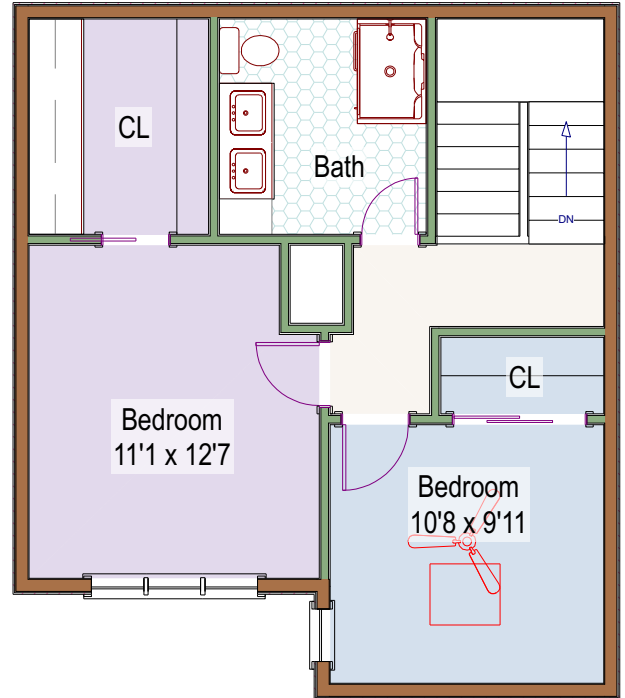


757 Poplar Avenue
Boulder, Colorado

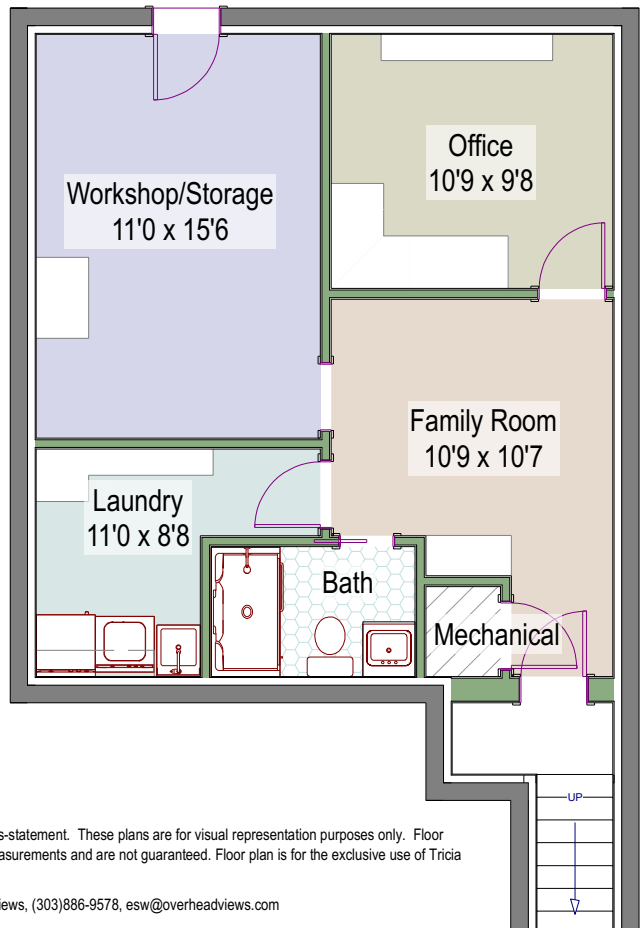
Main Level - 512 square feet +/-



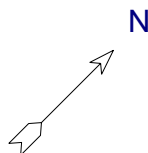
Upper Level - 512 square feet +/-



Lower Level - 584 square feet +/-
574 finished square feet +/-
10 unfinished square feet +/-



Tricia Dessel
(303)475-6097 mobile
tricia@burgessgrouprealty.com



Measurements are approximate and no responsibility is taken for any omission or mis-statement. These plans are for visual representation purposes only. Floor plan is not an architectural as-built. Square footage numbers are based on exterior measurements and are not guaranteed. Floor plan is for the exclusive use of Tricia Dessel and may not be transferred or sold.