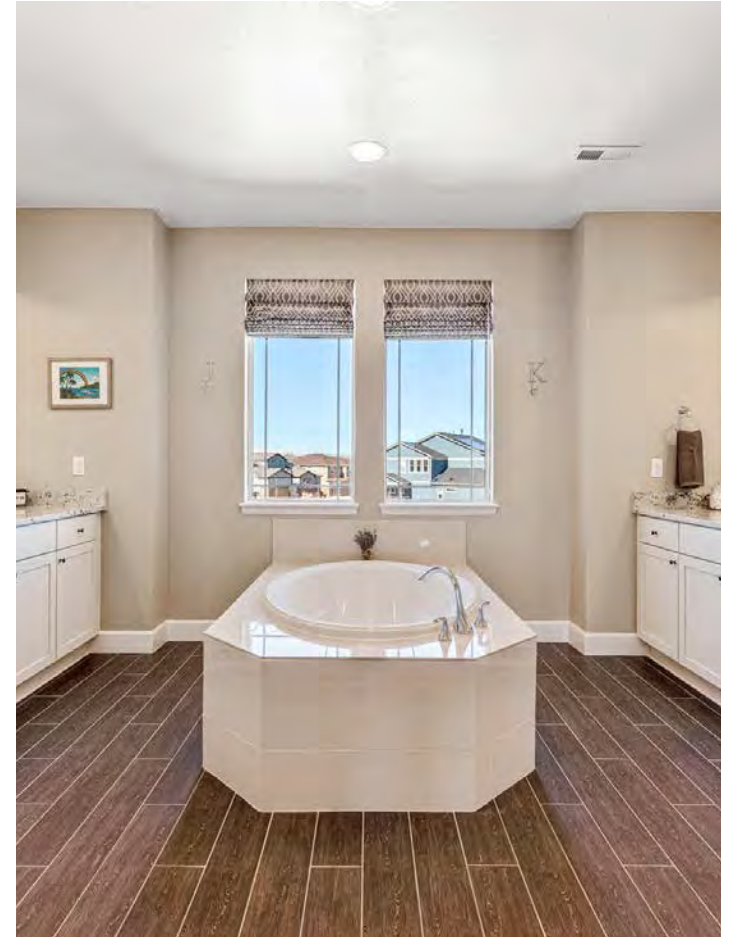




949 Stagecoach Drive

\$1,350,000



Trails at Coal Creek

4 Bdrms | 3.5 Baths
3 Car Side by Side Garage
2 Office Spaces
1 Loft

4,962 SF
Fully Finished Basement
8.28kW Solar System



Trails at Coal Creek is a premier neighborhood offering access to the best of both Louisville and Lafayette. It is surrounded by open space and the Coal Creek trail system, walking distance to award winning schools, and convenient to Boulder, Denver, and DIA. This striking home offers soaring 21' ceilings in the main level living space and two office spaces with the flexibility to convert either into a main level bedroom. Upstairs, the primary is truly a suite to appreciate. Barn doors open to a full sized laundry area. The two secondary bedrooms are generous in size with a shared bath, and the loft is a perfect bonus space for most any need. The finished basement offers an expansive amount of additional living space along with a bedroom and bath. The home also boasts a fantastic private backyard, one of the largest in the neighborhood. If energy efficiency is your thing, you'll enjoy a 8.28kW solar system, dual HVAC system, spray foam insulation, PEX plumbing, and low-e windows.





Area Amenities:

Enjoy Neighborhood and City Parks
 Access to Coal Creek Trail System
 Central to Downtown Louisville and Lafayette
 15 min to Boulder and 30 min to Denver

One of the largest and most private backyards
 the neighborhood has to offer.



David Trow

Realtor®
 303.880.7255
david.trow@compass.com

