



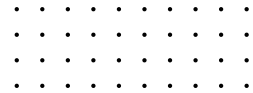
Autumn Chase

3032 W 107th Place #F, Westminster



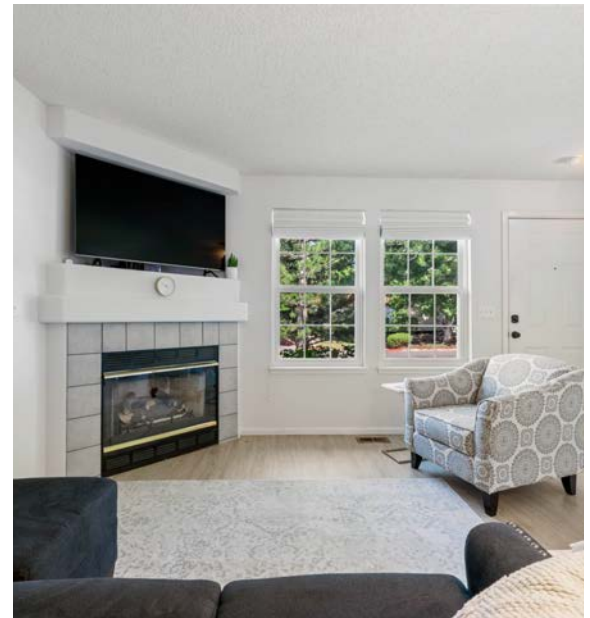
3032 W 107th Place #F, Westminster

Convenient to shops, restaurants, and green space, 3032 W 107th Place #F is a perfect mid-point between Boulder and Denver, with excellent oversized reserved parking right outside the unit, plus ample visitor/street parking closeby.

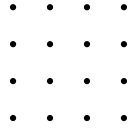


Transition from getting cozy by the fire with friends to enjoying your enclosed stone patio, surrounded by shady trees begging to be draped with fairy lights. The stylish new backsplash, vent hood, fridge (due in the middle of August) and light fixtures give your kitchen prep space a modern finish. The bedrooms, with vaulted ceilings and skylights, feel airy with lovely soft light. Both the primary bathroom and the powder room are fresh and updated.

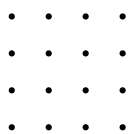
The HOA provides residents with water/sewer, the community pool and cabana in the summer months and shoveling in the winter. Super close to Legacy Ridge Golf Course, Valley View Park, and Mushroom Pond Trailhead. As an added perk, Autumn Chase sits in a 5-star school district. Welcome home!



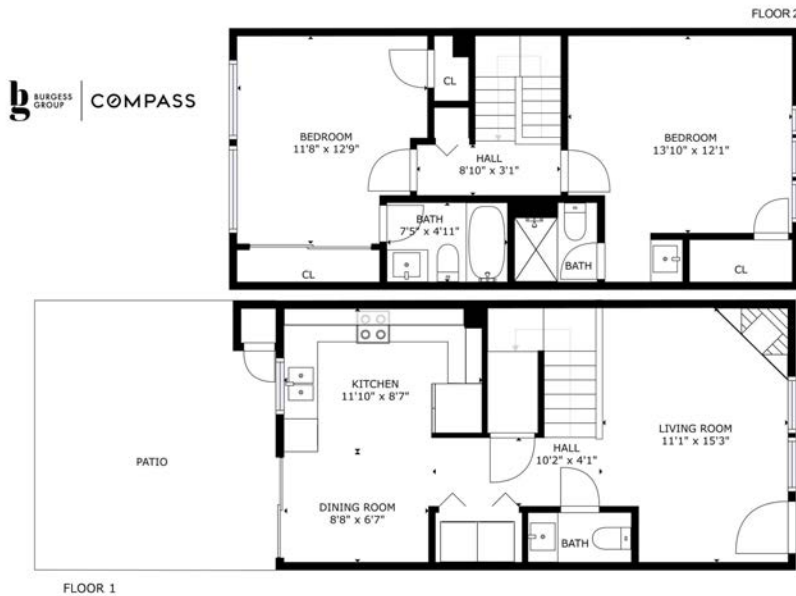
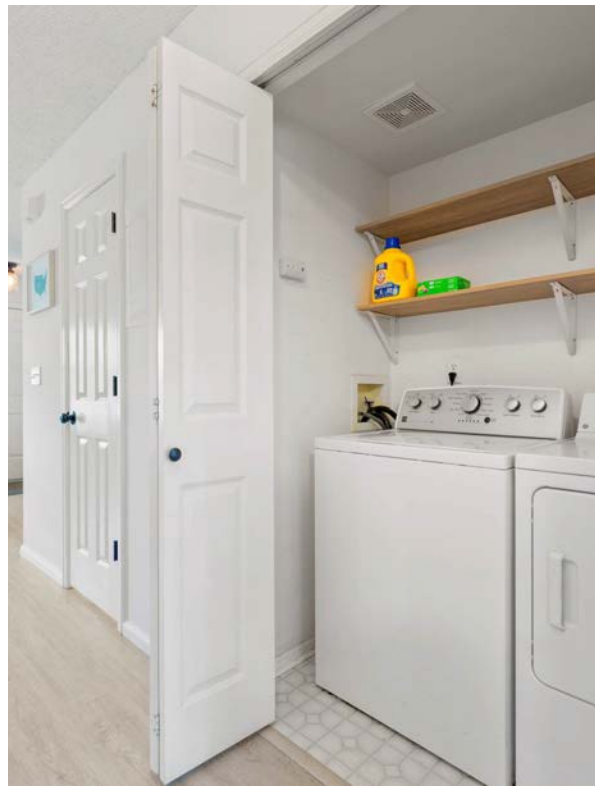
2 BD 2.5 BA 1,088 SF



- 2 Beds
- 2.5 bath Baths
- Two Levels - End Unit
- 1,088 Square Feet
- 2-Assigned parking spaces located right out front door (#363 & 364)
- New kitchen electric Range and vent hood (July'22)
- New GE stainless steel refrigerator (due Mid-August)
- New backsplash
- Dishwasher (2017)
- Cold water filter at kitchen sink
- Crawl space & Sump pump
- Sky lights in primary bedroom
- New laundry
- LVT flooring throughout main floor (2017)
- HOA Pool (across street), Clubhouse, Trash, Recycle, Roof & ext. maintenance
- New light fixtures throughout
- Outside storage closet on the back patio attached to home
- Double pane windows, Storm door & Sliding Patio door (2019)
- New vanity tops in all three baths and bases repainted
- HOA pays Water and Sewer - City of Westminster
- Freshly painted living room and hallway
- 4 foot wood fence on enclosed patio
- Close to Windsor Park (with tennis, soccer, volleyball & playground)



2 BD 2.5 BA 1,088 SF



Andy Burgess

REALTOR
303.301.4718
andy@burgessgrouprealty.com



Catherine Burgess

REALTOR
303.506.5669
catherine@burgessgrouprealty.com

Compass is a licensed real estate broker. All material is intended for informational purposes only and is compiled from sources deemed reliable but is subject to errors, omissions, changes in price, condition, sale, or withdrawal without notice. No statement is made as to the accuracy of any description or measurements (including square footage). This is not intended to solicit property already listed. No financial or legal advice provided. Equal Housing Opportunity. Photos may be virtually staged or digitally enhanced and may not reflect actual property conditions.

